

M-Elec compatible dimming charts

We have tried and tested all of the following dimmer models and have collated the data into this resource.

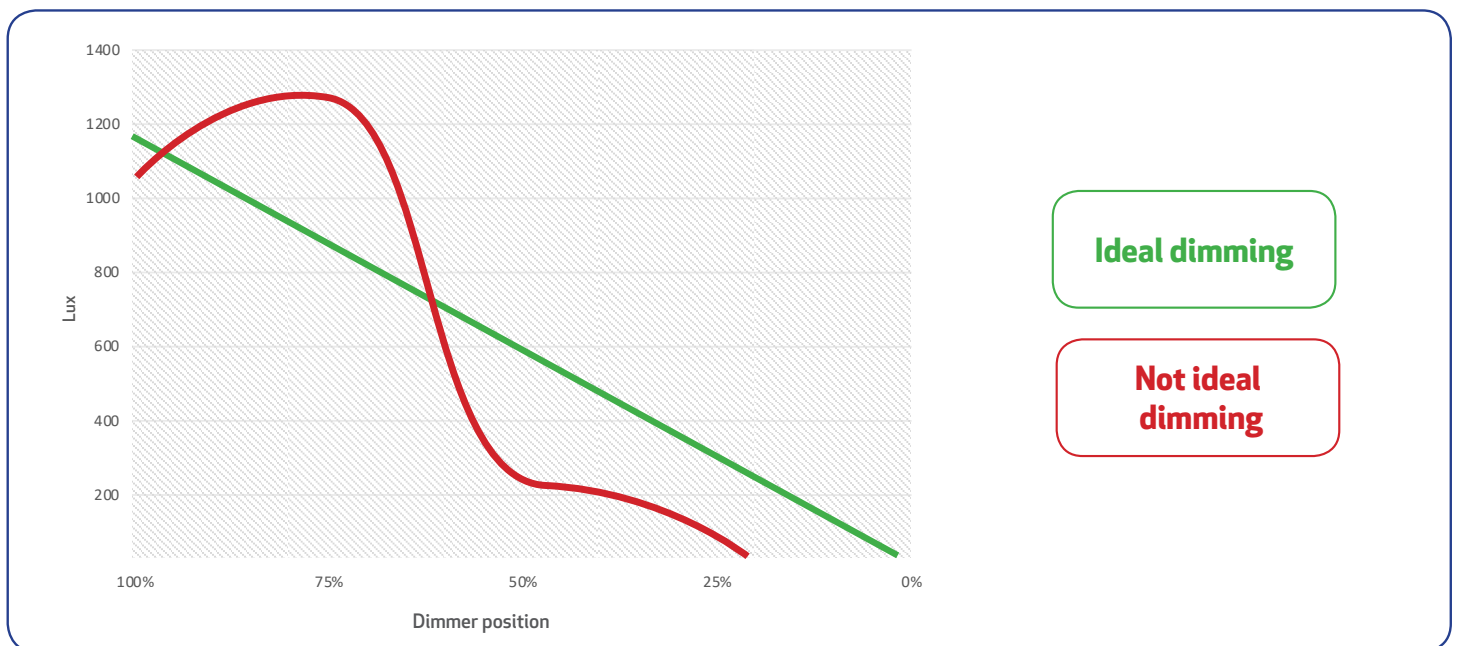
Please use this resource to inform your purchase choice of compatible dimmers. Please test onsite with the dimmer to ensure the same results will be found in your installation location. M-Elec does not warrant any problems caused by dimmers of other manufacturers.

HOW TO READ DIMMING CHARTS

After conducting tests in our Lab at HQ we put this data sheet together and have recommended dimmers which performed the best. The content in this document is a graph and a table chart to display the data from testing for each product. In the charts, we have highlighted our top pick. To understand the graph see below the ideal example vs a bad example of dimming data. Lux is for reference only and not a measurement of 100% or less. All downlights have been tested with 3 downlights connected.

DISCLAIMER

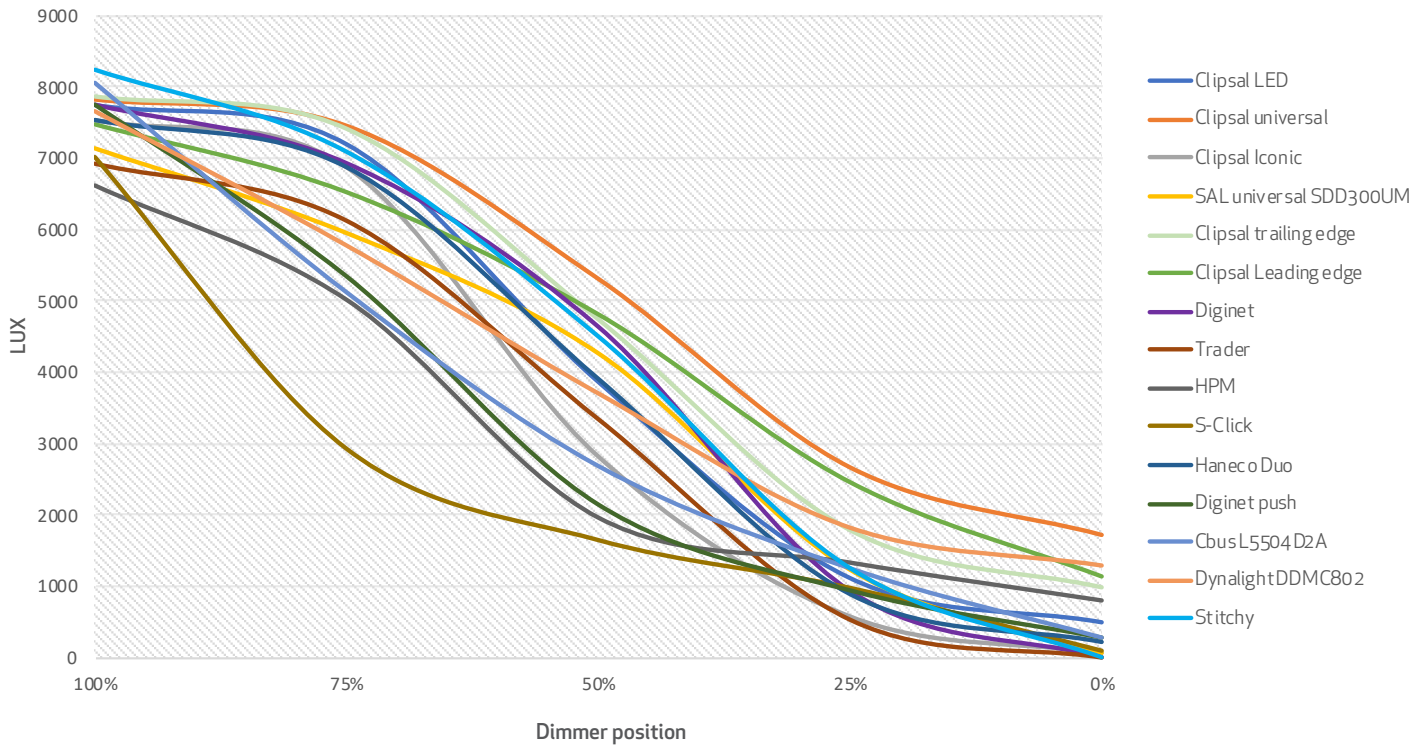
M-Elec takes no responsibility for dimmer/s you install on any M-Elec products. Dimming charts and results are supplied for reference only and for the best results tests should be conducted ON SITE. Dimmers are updated frequently by their manufacturers and M-Elec takes no responsibility for flickering lights or damage occurred by dimmers or control units connected to M-Elec products.



PRODUCT BRAND	PRODUCT CODE	COMPATIBLE WITH 1 DOWNLIGHT	AFTER GLOW	NOTE
Clipsal LED	32ELEDM	Yes	No	
Clipsal universal	32E450UDM	Yes	No	
Clipsal Iconic	42E350RLD2M OR PDL354RDMLED	Yes	No	
SAL universal SDD300UM	SDD300UM	Yes	No	
Clipsal trailing edge	32E450TM	Yes	No	
Clipsal Leading edge	32E450LM	No	No	
Dignet	MEDM	Yes	No	
Trader	DIMPR	Yes	Yes	After glow on 1 DL
HPM	EM400TR	Yes	Yes	
S-Click	HNS61DT	Yes	No	
Haneco Duo	DU0350W-W	Yes	Yes	After glow on 1 DL
Dignet push	MMDM/RT	Yes	Yes	After glow on 1 DL
CBUS L5504D2A	L5504D2A	Yes	No	Cbus dimmer buzzes
Dynalight DDMC802	DDMC802	Yes	No	
Stitchy	ML-ST-D200	No	No	

1BOX-C4050

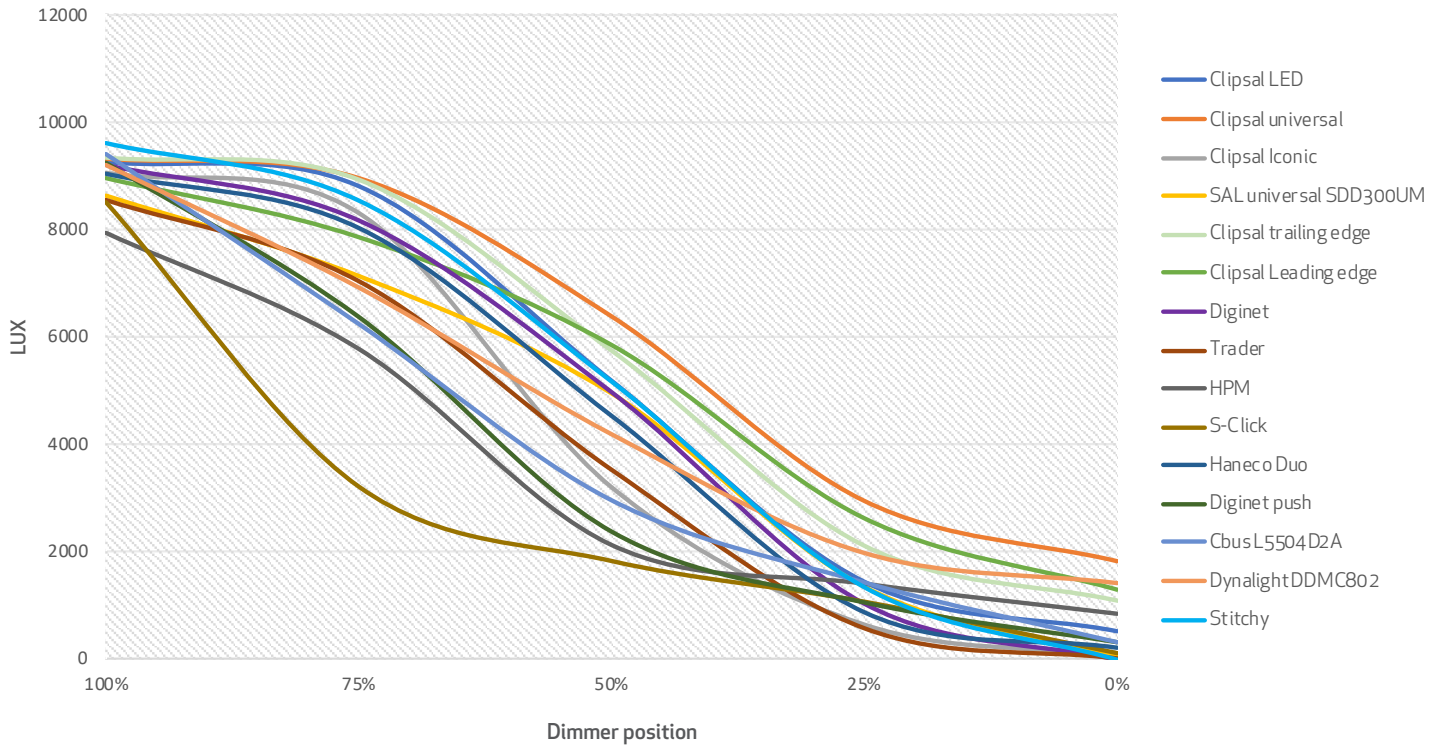
TESTED ON NW & 40W MODE WITH 3 DOWNLIGHTS



PRODUCT BRAND	COMPATIBLE WITH 1 DOWNLIGHT	AFTER GLOW	NOTE
Clipsal LED	Yes	No	
Clipsal universal	Yes	No	
Clipsal Iconic	Yes	No	
SAL universal SDD300UM	Yes	No	
Clipsal trailing edge	Yes	No	
Clipsal Leading edge	Yes	No	
Diginet	Yes	No	Perfect
Trader	Yes	No	Perfect
HPM	Yes	No	
S-Click	Yes	No	
Haneco Duo	Yes	No	
Diginet push	Yes	No	
CBUS L5504D2A	No	No	Strobing when 1 DL dimmed
Dynalight DDMC802	Yes	No	
Stitchy	Yes	No	

1BOX-C4050

TESTED ON NW & 50W MODE WITH 3 DOWNLIGHTS



PRODUCT BRAND	COMPATIBLE WITH 1 DOWNLIGHT	AFTER GLOW	NOTE
Clipsal LED	Yes	No	
Clipsal universal	Yes	No	
Clipsal Iconic	Yes	No	
SAL universal SDD300UM	Yes	No	
Clipsal trailing edge	Yes	No	
Clipsal Leading edge	Yes	No	
Diginet	Yes	No	Perfect
Trader	Yes	No	Perfect
HPM	Yes	No	
S-Click	Yes	No	
Haneco Duo	Yes	No	
Diginet push	Yes	No	
CBUS L5504D2A	No	No	Strobing when 1 DL dimmed
Dynalight DDMC802	Yes	Yes	
Stitchy	Yes	No	