

1box™ C4050



TECHNICAL DETAILS

Total power consumed: 38W | 46W*
Lumen output 38W: 3820lm W, 4160lm NW, 3850lm WW
Lumen output 46W: 4430lm W, 4900lm NW, 4480lm WW
Colour temperature: 6000K W, 4000K NW, 3000K WW
IP rating: IP54
CRI: 80+
Beam angle: 95 degrees
Dimmable: Yes (for dimming range see our website)
Power supply: 220-265V input (ML-1BOX4050D)
Average life: 40,000 hrs**
Warranty: 4 years (6 years for PLI - claim via website)
Diameter 228 mm, Depth 110 mm, Cut-out 185 mm
Weight: 1.3 kg
Upgrades: 280mm adapter plate (white ML-280-T, silver ML-280BA-T),
Surface mounted enclosure (white ML-C30-SM, silver ML-C30BA-SM),
Silver trim (ML-CT-S), Black trim (ML-CT-B)

* Total power consumed including driver
** Life span is calculated on expected average life of driver

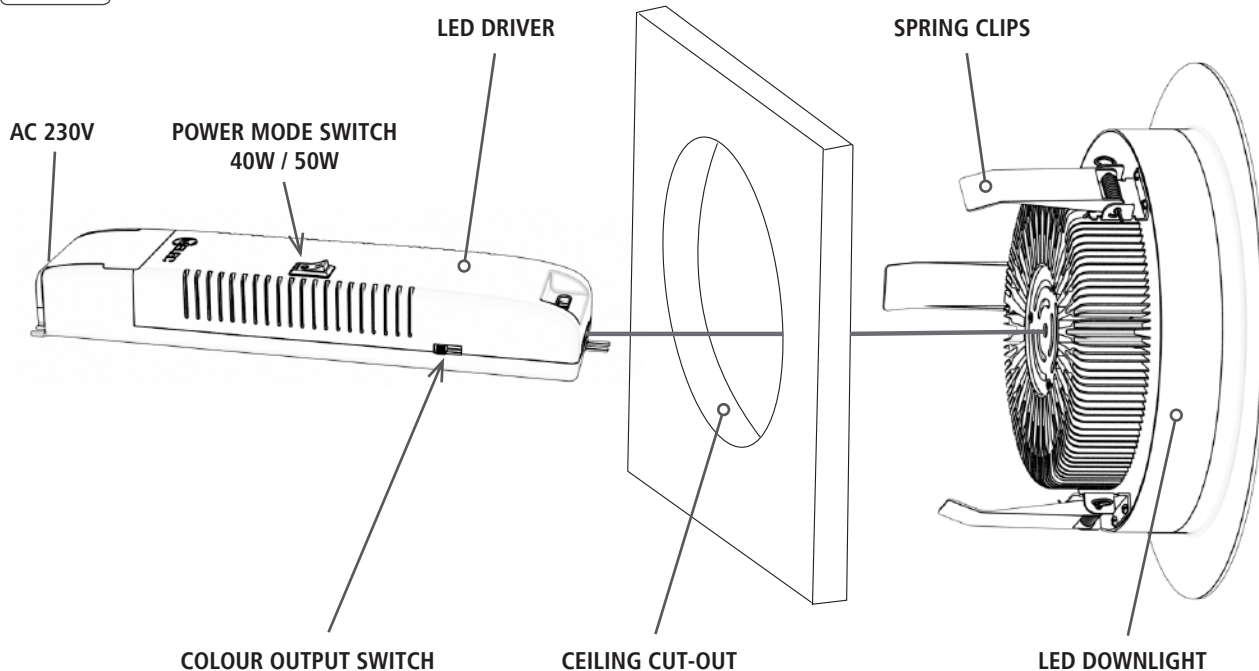
INCLUDED IN THE BOX

- 1 x LED High powered downlight
- 1 x Dimmable driver
- 1 x Flex & plug

INSTALLATION INSTRUCTIONS

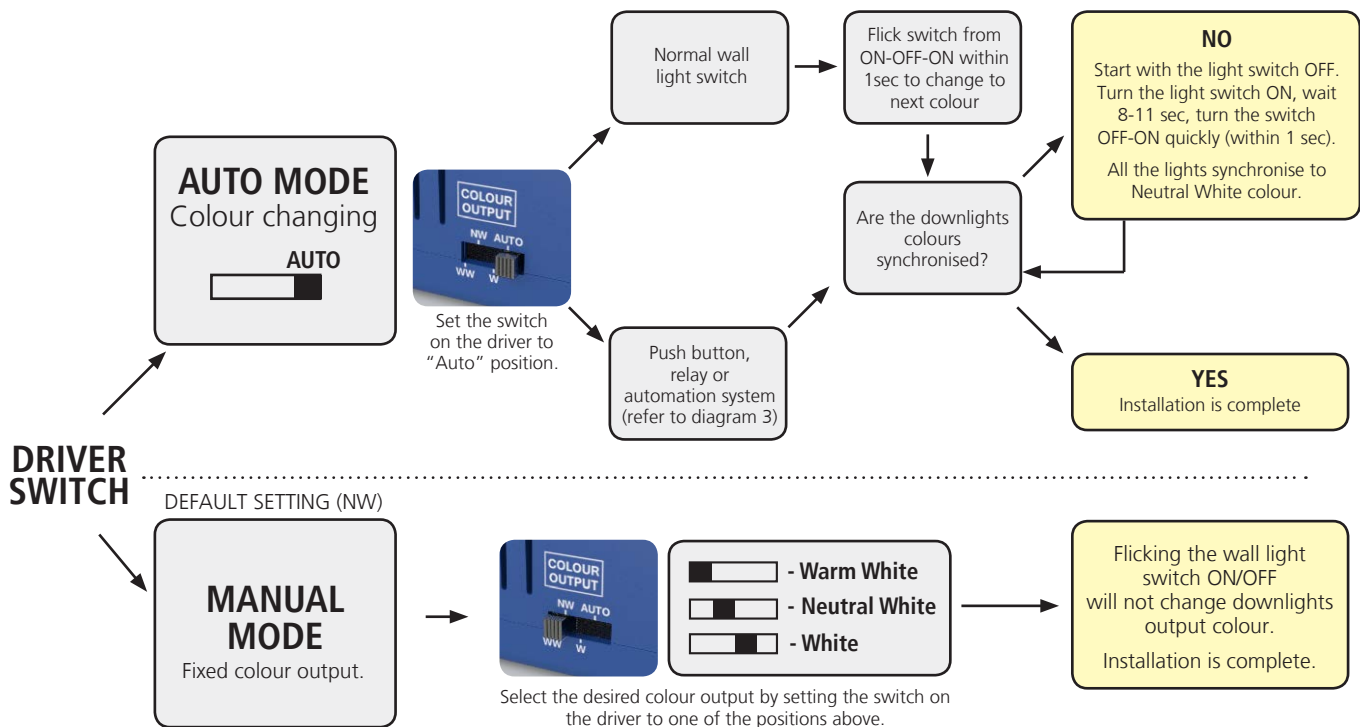
1. Disconnect mains before proceeding,
2. Remove existing downlight and disconnect old transformer OR mark and cut out 185 mm hole in ceiling,
3. Wire up new LED power supply in accordance with marked terminals,
3. Set the switch on the driver to 40W / 50W power mode (refer to diagram 1),
4. Set the switch on the side of the driver to desired setting (refer to diagram 2), default setting is manual mode; Neutral White,
5. Plug-in high powered downlight to the connector from the power supply,
6. TEST to ensure all downlights are producing same output colour if in AUTO mode. If not, follow the "Master reset" steps (see next page)
7. Carefully bend spring clips upwards and install new LED downlight.

diagram 1



DRIVER FACTORY SETTINGS

diagram 2



MASTER RESET

If any of the 1boxC4050 downlights are out of synchronisation when on "AUTO" mode (are in different colour output than the rest), please follow the steps below.

1. Start with the light switch OFF.
2. Turn the light switch ON, wait 8-11 sec, then turn the switch OFF-ON quickly (within 1 sec).
3. All the lights synchronise to Neutral White colour.

Watch the YouTube video on how to do the master reset. Scan the QR code.



PLEASE NOTE

IF this product is set to **AUTOMATIC** mode and there is inconsistent or fluctuating voltages, the light fitting may change colour.

Please see the instructions on how to reset the drivers to factory settings if this occurs. M-Elec will not be held responsible for any variations in voltage or flickering that are on the input side of the drivers. If any of these problems continue to occur we suggest operating the 1BOX in MANUAL mode and contacting your electricity provider.

- MUST BE INSTALLED BY LICENSED ELECTRICIAN
- Do not extend low voltage cables from the output of power supply
- All components must not be mechanically stressed
- Be careful not to damage or destroy conductive paths on the circuit board
- Follow all relevant electrical and safety standards (including AS3000)
- Correct electrical polarity must be observed as the wrong polarity may destroy the product and is not covered under warranty
- Damage by corrosion will not be honoured as a material defect claim. It is the user's responsibility to provide suitable protection against corrosive agents such as moisture, condensation and other harmful elements.
- This product has full compliance with the CA135 rating and therefore can not be covered in thermal insulation, but can be installed up against combustible material safely. M-Elec recommends that an air gap is left around driver + light to ensure the maximum life span of the product is achieved. Please request test report for more details on CA135.
- For further information including photometrics & dimming range, please visit www.melec.com.au

For further information including photometrics & dimming range, please visit www.melec.com.au