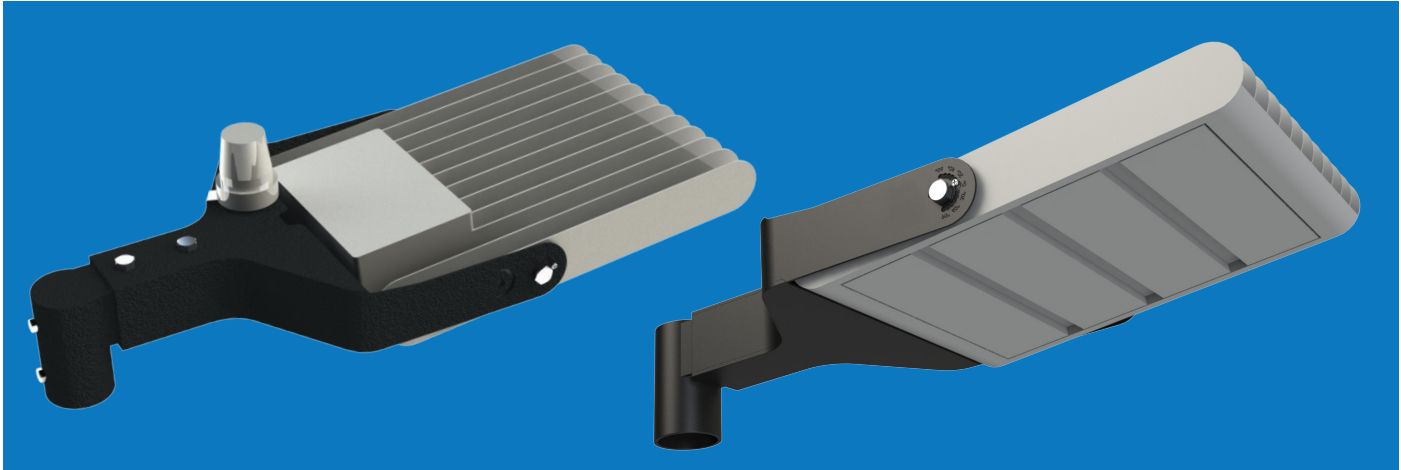


NOX brackets

ML-NOX3BKT, ML-NOX5BKT, ML-NOX10BKT,
ML-NOX20BKT, ML-NOX30BKT, ML-NOXSP, ML-NOXSPBKT, ML-PE10



ML-NOX3BKT Technical details

Bracket for pole installation of NOX floodlight

Suits: NOX3-V2
Length: 307 mm
Width: 177 mm
Height: 72 mm
Pole mounting dimensions: 62 x 62mm
Weight: 1.96kg
Material: Steel
Colour: Black
Kit includes: Bracket, securing bolts



ML-NOX5BKT Technical details

Bracket for pole installation of NOX floodlight

Suits: NOX5-V2
Length: 318 mm
Width: 223 mm
Height: 72 mm
Pole mounting dimensions: 62 x 62mm
Weight: 2.2kg
Material: Steel
Colour: Black
Kit includes: Bracket, securing bolts



ML-NOX10BKT Technical details

Bracket for pole installation of NOX floodlight

Suits: NOX10-V2, NOX15-V2
Length: 373 mm
Width: 326 mm
Height: 72 mm
Pole mounting dimensions: 62 x 62mm
Weight: 2.6kg
Material: Steel
Colour: Black
Kit includes: Bracket, securing bolts



ML-NOX20BKT Technical details

Bracket for pole installation of NOX floodlight

Suits: NOX20-V2
Length: 378 mm
Width: 326 mm
Height: 72 mm
Pole mounting dimensions: 62 x 62mm
Weight: 2.65kg
Material: Steel
Colour: Black
Kit includes: Bracket, securing bolts



ML-NOX30BKT Technical details

Bracket for pole installation of NOX floodlight

Suits: NOX30-V2
Length: 409 mm
Width: 326 mm
Height: 72 mm
Pole mounting dimensions: 62 x 62mm
Weight: 2.7kg
Material: Steel
Colour: Black
Kit includes: Bracket, securing bolts



ML-NOXSP Technical details

Straight pole spigot adapter for NOX brackets

Suits: NOX3BKT, NOX5BKT, ML-NOX10BKT, ML-NOX20BKT, ML-NOX30BKT
Length: 90mm
Width: 60mm
Height: 60mm
Pole mounting dimensions: 25-34mm diameter
Weight: 0.34kg
Material: Steel
Colour: Black
Kit includes: Adapter, securing bolts



ML-NOXSPBKT Technical details

Right angle pole adapter for NOX brackets

Suits: NOX3BKT, NOX5BKT, ML-NOX10BKT, ML-NOX20BKT, ML-NOX30BKT
Length: 189mm
Width: 70mm
Height: 124mm
Pole mounting dimensions: 50-60mm diameter
Weight: 1.49kg
Material: Steel
Colour: Black
Kit includes: Adapter, securing bolts



ML-PE10 Technical details

PE cell light control sensor for NOX floodlight brackets

Suits: NOX3BKT, NOX5BKT, ML-NOX10V2BKT, ML-NOX20V2BKT, ML-NOX30V2BKT
Voltage: 100-240AC
Frequency: 50/60hz
Current: 10A
Power rating: 300W max for LED 1000W max for incandescent light
Sensitivity: 5-100LUX
Diameter: 63mm
Height: 75mm

NOX brackets

ML-NOX3BKT, ML-NOX5BKT, ML-NOX10BKT,
ML-NOX20BKT, ML-NOX30BKT, ML-NOXSP, ML-NOXSPBKT, ML-PE10

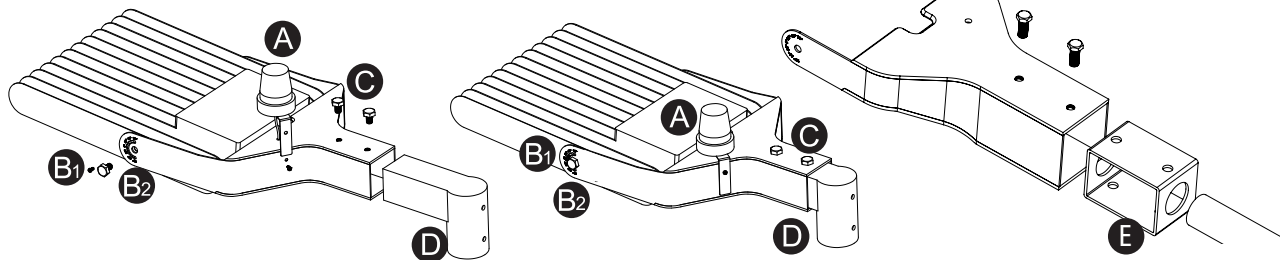


Installation instructions



PLEASE FOLLOW INSTRUCTIONS FOR CORRECT INSTALLATION:

1. Remove the original NOX bracket from the NOX fitting. Keep all screws for the following steps.
2. OPTIONAL - Install the optional ML-PE10 light sensor by sliding the cables through the hole into the bracket and fix to the side of the bracket using the included screw (A).
3. Slide the NOX fitting into the new bracket and fix into place using the existing bracket bolts (B2) on both sides. Ensure you set the correct angle for the NOX and lock it into place using screws (B1).
4. OPTIONAL - Slide the NOXSPBKT right angle pole adapter into the horizontal bracket (D) and fix using the included M10 bolts.
5. OPTIONAL - Slide the NOXSP strait pole spigot adapter into the base of the horizontal bracket (E) and slightly tension the M10 fixing bolts to hold it into position.
6. Terminate the input cables to the NOX (including the PE10 if applicable).
7. Slide the completed unit into place and securely fix the unit into place using included M10 bolts (C) or other suitable fixings.
8. Test to ensure compliance and safety.



PLEASE NOTE

- MUST BE INSTALLED BY A LICENSED ELECTRICIAN
- All components must not be mechanically stressed
- Follow all relevant electrical and safety standards (including AS3000) – only qualified personnel should be allowed to perform installations
- Correct electrical polarity needs to be observed as the wrong polarity may destroy the lights which is not covered under warranty
- Damaged by corrosion will not be honoured as a materials defect claim. It is the user's responsibility to provide suitable protection against corrosive agents such as moisture, condensation and other harmful elements
- If these regulations are not followed warranty will be void and all issues are the responsibility of the electrician
- For further information including photometrics & dimming range, please visit www.melec.com.au

Warranty disclaimer

M-ELEC TRANSFORMERS/DRIVERS

M-Elec provides warranty against defects of M-Elec drivers on the following terms and conditions. Please refer to the M-Elec website (below) for information on the warranty period of each product.

The driver must be properly installed by a qualified electrician and in accordance with our installation guidelines and any relevant codes and standards.

The warranty does not apply to M-Elec drivers that fail as a result of neglect, mistake, misuse, alteration, exposure to the elements, or that is improperly installed and implemented. This includes but is not limited to: improper wiring, installation under improper and non-approved operating environments such as temperature, humidity, corrosion or voltage conditions; improper installation using components that are not approved or are not M-Elec manufactured products.

It is the responsibility of the purchaser to obtain all necessary approvals and to understand the products intended use and all relevant instructions, recommendations and guidelines for the proper installation and use of any M-Elec driver product and related 'manufactured products' used in conjunction with same.

M-Elec is not liable for the accuracy and completeness of any statements, technical information and recommendations in any form of product literature or instructions are not guaranteed and are not part of this warranty and does not in any way constitute a warranty. The purchaser is solely responsible for determining suitability of the M-Elec drivers for installation and full implementation must determine potential applications and installations independently.

To make a claim on this warranty, you must do so within the warranty period (from place of purchase) please read our returns policy for further information (<https://melec.com.au/returns-policy/>) and deliver the driver to M-Elec (at your cost) at the address listed on website. We will assess the warranty claim and if we grant the warranty claim, we will replace the product or refund your money, at our election.

M-Elec is not responsible or liable for any injuries, damages, or death caused by the use, misuse or failure of products purchased from us. This warranty is in addition to any other rights the consumer may have under the Australian Consumer Law.

M-ELEC LED PRODUCTS - OTHER

Please refer to the M-Elec website (melec.com.au) for information on the warranty period of each product. Each of our LED product warranties is separate and subject to the following terms and conditions:

M-Elec products must be properly installed by a qualified electrician and in accordance with any relevant guidelines, codes and standards. This includes wiring and connection to proper approved components and product working environments.

This warranty is void and does not apply to products that fail as a result of neglect, mistake

misuse, alteration, or that is improperly installed and implemented. This includes but is not limited to: improper wiring, installation under improper and non-approved operating environments such as temperature, humidity, corrosion or voltage conditions; improper installation using components that are not approved or are not M-Elec manufactured products.

It is the responsibility of the purchaser to obtain all necessary approvals and to understand the products intended use and all relevant instructions, recommendations and guidelines for the proper installation and use of any M-Elec products and related 'manufactured products' used in conjunction with same.

M-Elec is not liable for the accuracy and completeness of any statements, technical information and recommendations in any form of product literature or instructions are not guaranteed and are not part of this warranty and does not in any way constitute a warranty. The purchaser is solely responsible for determining suitability of the M-Elec LED products for installation and full implementation must determine potential applications and installations independently.

The LED product warranties do not cover LEDs that continue to light, but exhibit varying/differing forward voltage drops, light output, or colour/wavelength.

Warranty is void if LEDs are cut in any way (outside of LED strip instructions) or damaged by neglect.

Warranty is void if products have been altered, opened/modified in any way that is outside the bounds of normal electrical work. **Please note:** This does not include removing or hard wiring downlight drivers or the hard wiring of a flex on an M-Elec flood light.

To make a claim on any of M-Elec's products, you must do so within the warranty period (from place of purchase) please read our returns policy for further information (<https://melec.com.au/returns-policy/>) and deliver the product to M-Elec (at your cost) at the address listed online. M-Elec will assess the warranty claim by conducting electrical tests, making sure the contacts still exist on the LED and visual and microscopic inspection to make sure there is no visible physical damage. If M-Elec grants the warranty claim, we will replace the product or refund your money, at our election.

M-Elec is not responsible or liable for any injuries, damages, or death caused by the use, misuse or failure of products purchased from us. This warranty is in addition to any other rights the consumer may have under the Australian Consumer Law.

To the fullest extent permitted by law, no warranties other than those described above are given in respect of M-Elec products. M-Elec's liability is limited, to the fullest extent permitted by law, to the refund or replacement of the M-Elec products. We expressly do not warrant that an M-Elec product will last any particular length of time nor guarantee is made as to fitness to a particular application, since we have no control of the electrical supply or circuits you are using to drive the LEDs.

M-Elec goods come with guarantees that cannot be excluded under the Australian Consumer Law.

Please read our returns policy procedure for further information on M-Elec website melec.com.au or request it via phone 1300 222 445 from our customer care consultants.